

## Venus: Faculty Account Access (Windows Vista)

You will need the following information to access your faculty account hosted on Venus:

**Connection URL:** `https://venus.atlantic.edu:82/(user name)`

**User Name:** Your Venus account name (typically first initial and last name)

**Password:** Your account password

**Site URL:** `http://venus.atlantic.edu/(user name)`

For example, teacher Jane Doe would have:

**Connection URL:** `https://venus.atlantic.edu:82/jdoe`

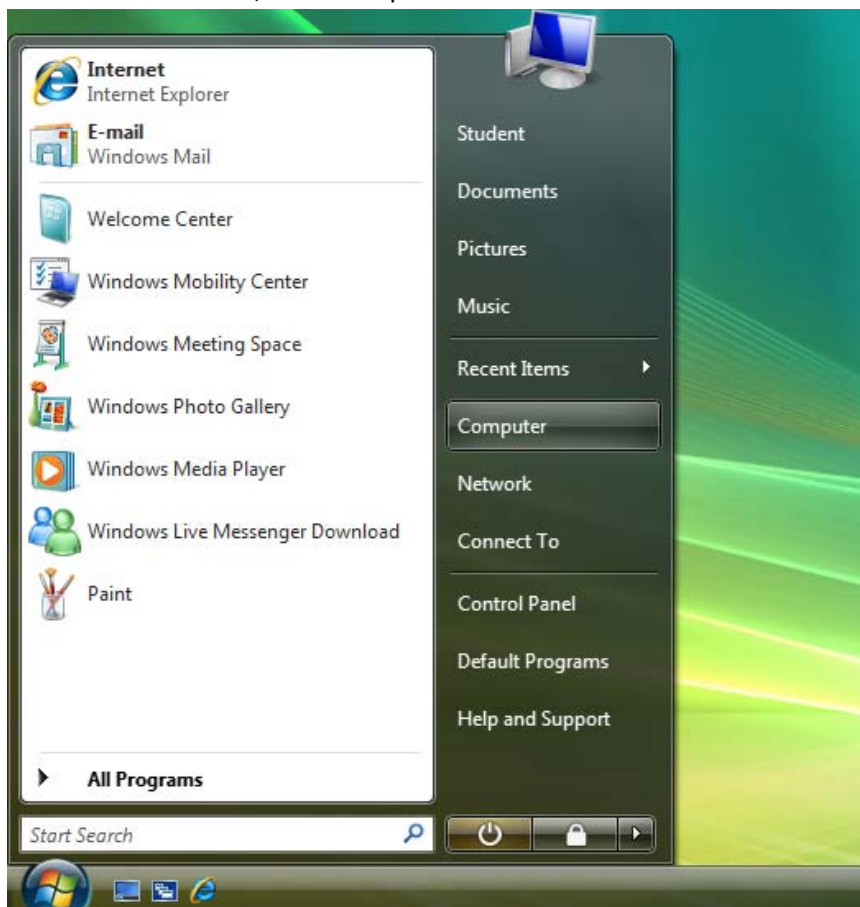
**User Name:** jdoe

**Password:** (her password)

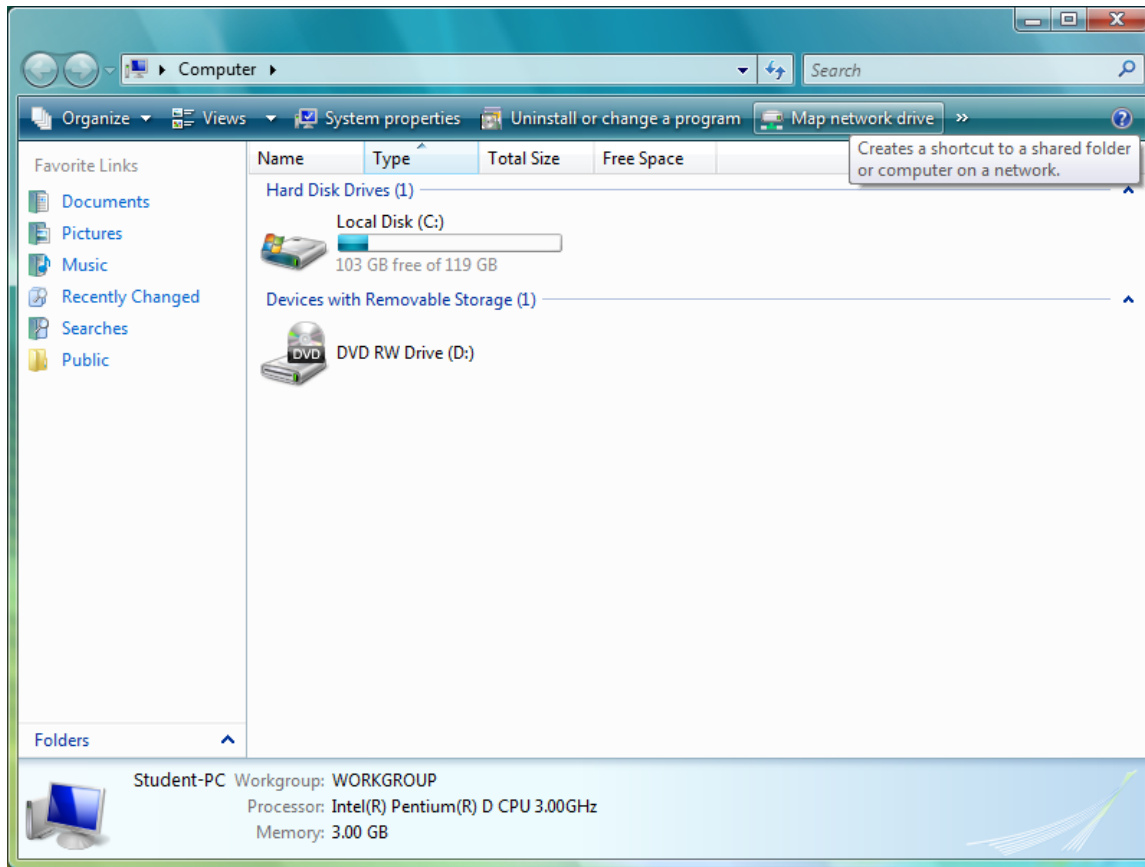
**Site URL:** `http://venus.atlantic.edu/jdoe`

(Note: There are multiple ways to connect to Venus depending on your operating system. The following should be the least complicated for Windows Vista, but if you are more comfortable with an alternate method, feel free to use that.)

- 1.) From the Start menu, click 'Computer.'



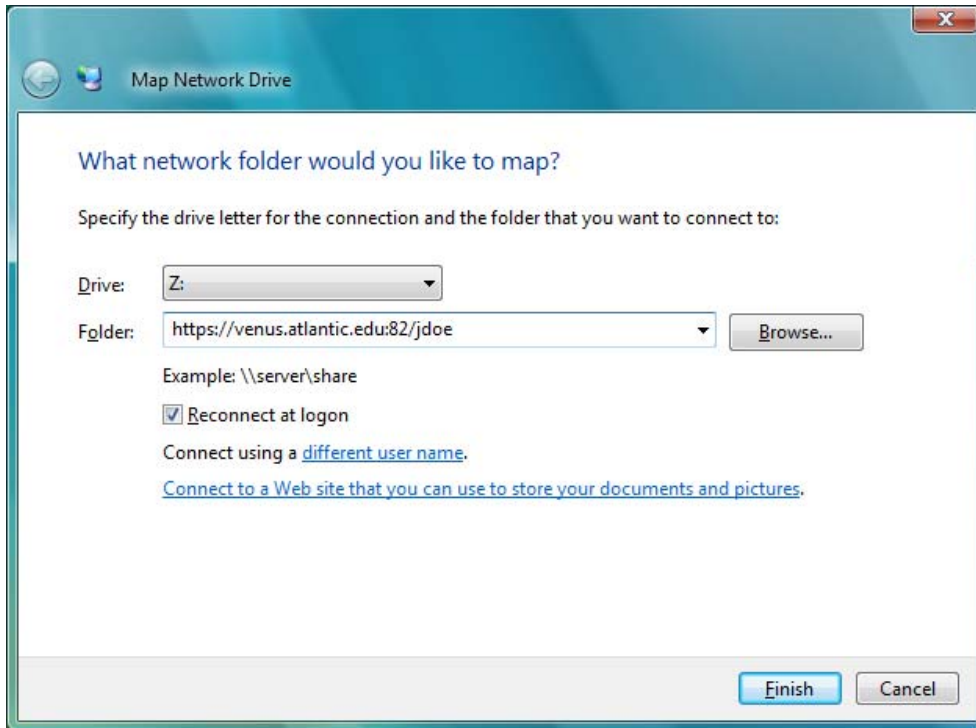
2.) From the 'Computer' window, click 'Map Network Drive.'



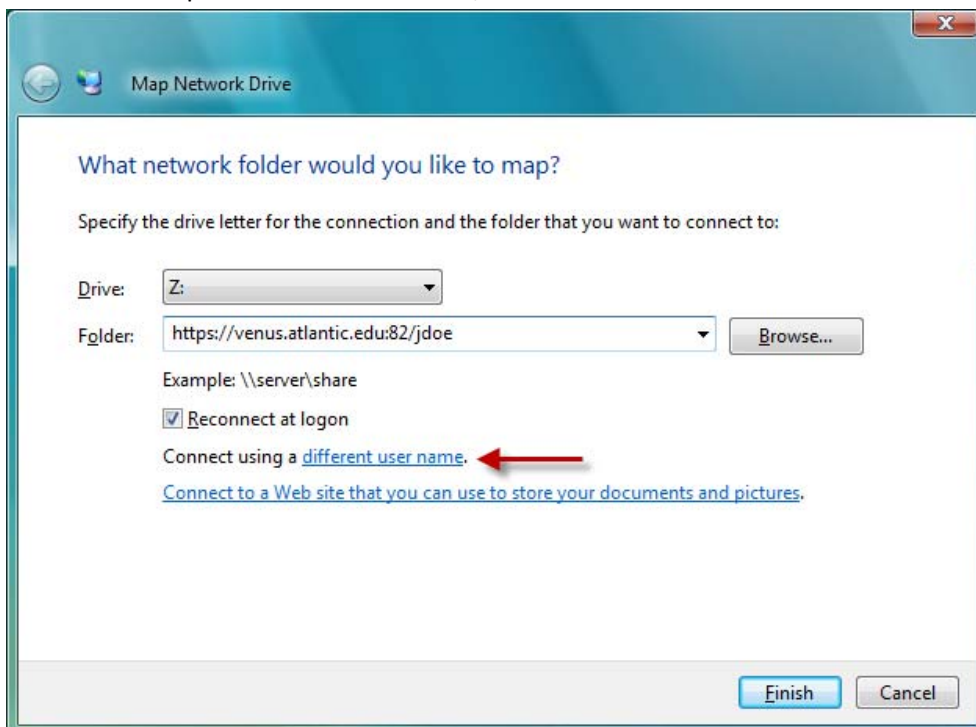
- 3.) In the 'Map Network Drive' window, for 'Folder,' enter the URL: **https://venus.atlantic.edu:82/(user name)**  
Your user name is typically your first initial and last name.

**Example:** Teacher Jane Doe would enter **https://venus.atlantic.edu:82/jdoe**

(Note: Windows should automatically select an unused drive letter next to 'Drive.' "Z:" was chosen in this example, but you might see a different letter depending on your computer settings.)



- 4.) Still on the 'Map Network Drive' screen, click on the underlined text in 'Connect using a **different user name.**'

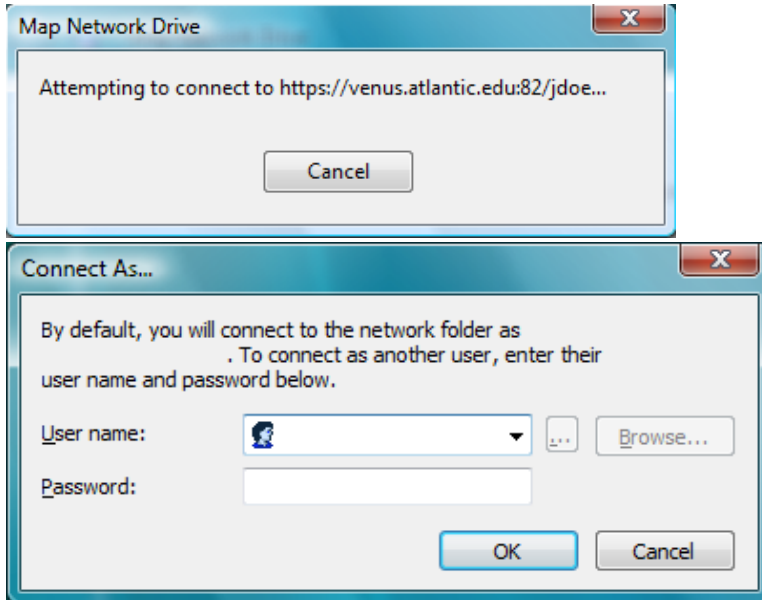


- 5.) The 'Connect As...' box should appear. Enter your Venus 'User name' (typically your first initial and last name) and 'Password', then click 'OK.'

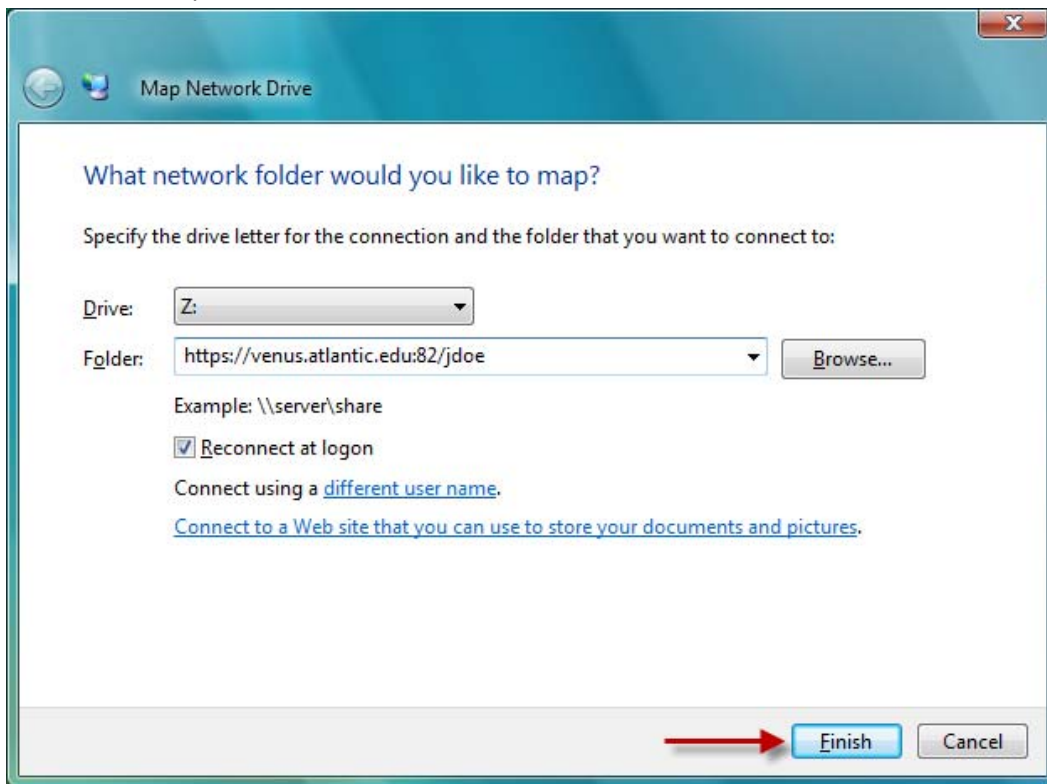
**Example:** Teacher Jane Doe would enter:

**User name:** jdoe

**Password:** (her password)



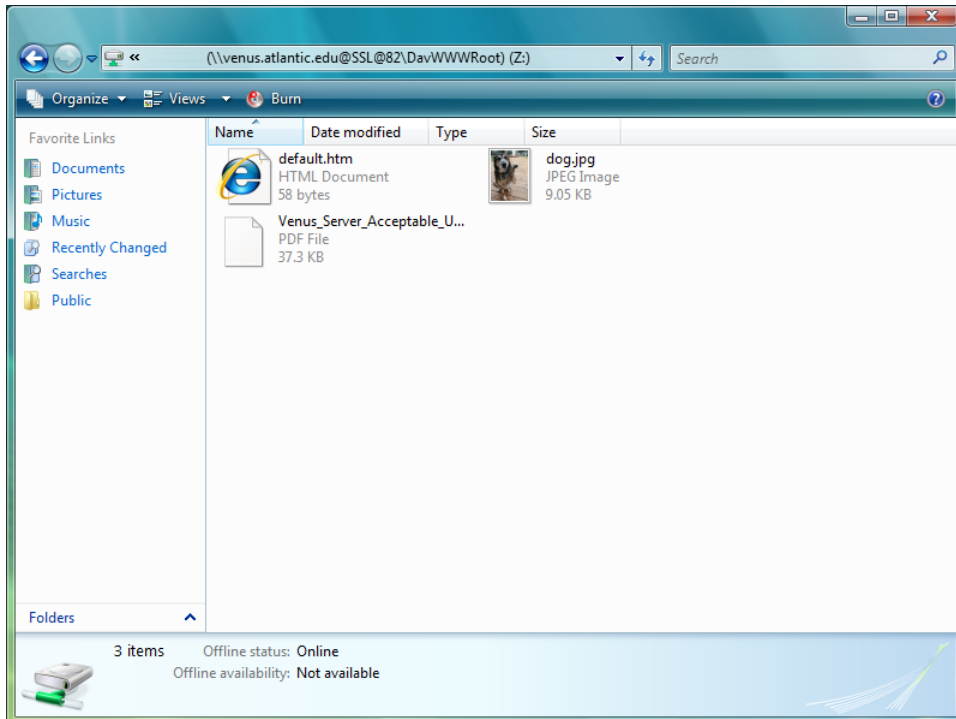
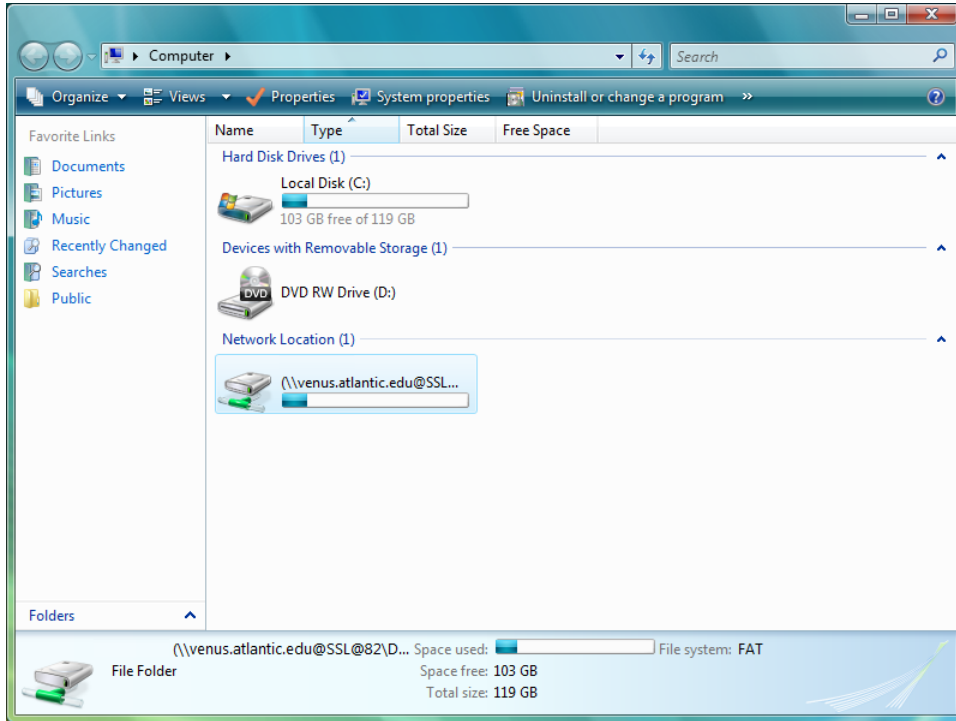
- 6.) Back at the 'Map Network Drive' box, click 'Finish'



7.) Depending on your computer settings, your account window might automatically appear at this point. If the 'Computer' window returns, there will be a new icon under the 'Network Location' heading with your user name. Double-click this icon to access your account.

(Note: Depending on your computer settings, the 'Connect As...' window from Step 5 might appear again. Re-enter your user name and password to access your account.)

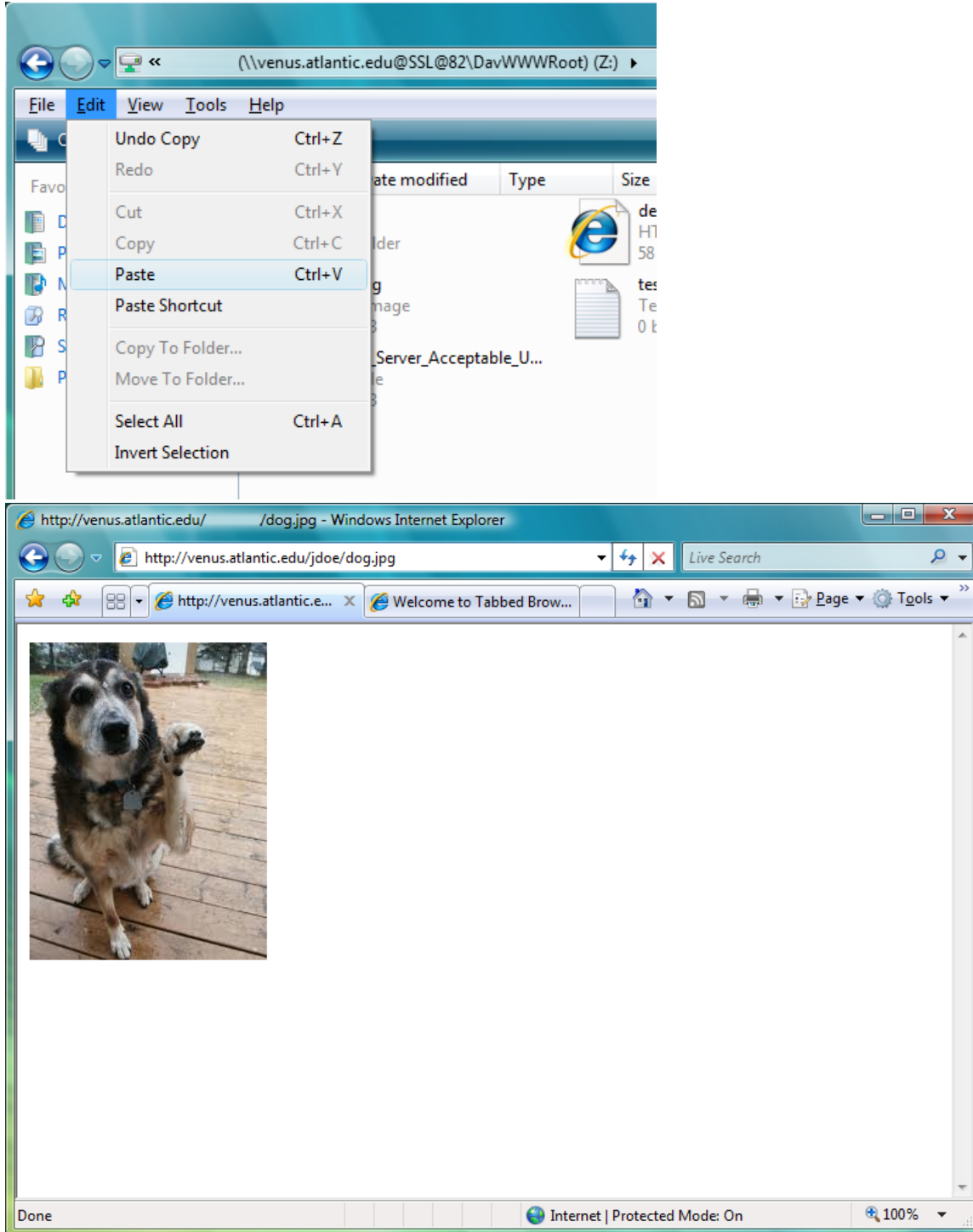
(Note: The contents of your folder will likely differ from the images below.)



- 8.) Add files and folders to your Venus account window just like you would on your local computer (drag-and-drop, copy-and-paste, etc.). Content will be accessible through any Web browser by typing in your URL and the file name.

**Example:** Teacher Jane Doe's file dog.jpg can be accessed entering **http://venus.atlantic.edu/jdoe/dog.jpg**

(Note: The 'Folder' address entered in Step 3 is the address needed to transfer files to and from the server. The address in this step displays content in a Web browser.)



- 9.) For security reasons, if accessing your account on a public computer, it is good practice to manually disconnect from the Venus server when finished. From the 'Computer' window, right-click your account icon and select 'Disconnect.'

